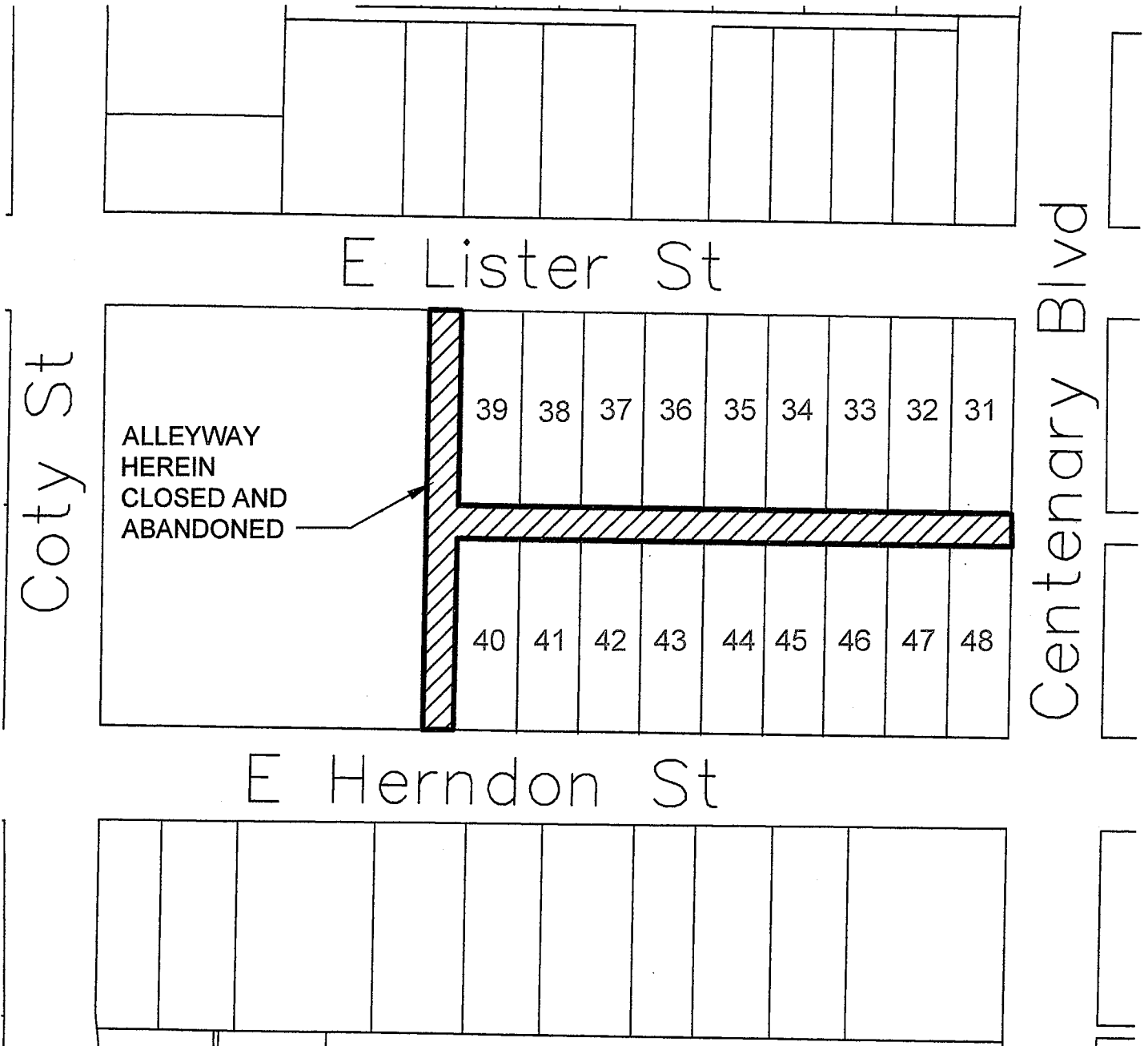


PLAT SHOWING CLOSURE AND ABANDONMENT OF THE DEDICATED  
20 FOOT-WIDE ALLEYWAY ABUTTING LOTS 31-48, BLOCK 2,  
OPO SUBDIVISION, LOCATED IN CITY OF SHREVEPORT  
NE1/4 OF SECTION 6 (T17N-R13W), CADDO PARISH, LOUISIANA.



APPROVED:

*[Signature]* 10/12/16  
METROPOLITAN PLANNING COMMISSION

ALLEYWAYS DEDICATE IN  
OPO SUBDIVISION  
RECORDED JUNE 1911  
IN BOOK 50, PAGE 397



PROPERTY MANAGEMENT SECTION

SCALE: 1" = 100'  
AUGUST, 2016